

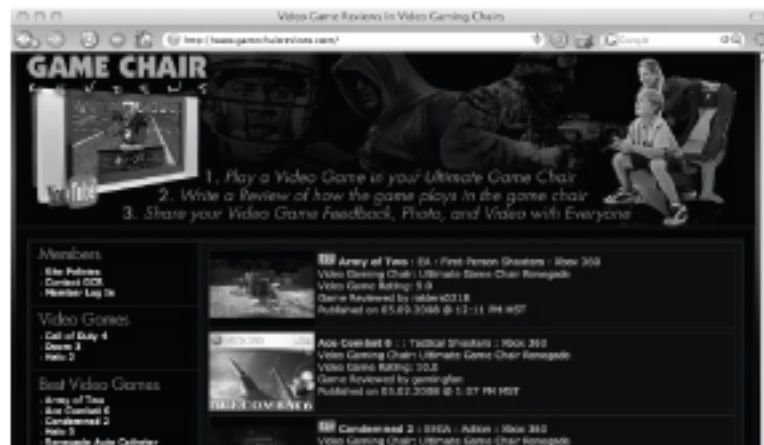
Thank You!

Thank you for your purchase of the Ultimate Game Chair V3™! Don't forget to register your Ultimate Game Chair v3™ by mail (with the included registration card) or online at:

<http://www.GameChairReviews.com/registration>

After registering your Ultimate Game Chair V3™, you are automatically enrolled in the exclusive Ultimate Game Chair™ online community.

At GameChairReviews.com you can review your favorite video games, movies and media, adding photos, artwork and even videos to enhance your review. Become a video game celebrity and let the world know which games work best in your Ultimate Game Chair V3™!



TRADEMARK AND COPYRIGHT INFORMATION

© 2001-2008 ULTIMATE GAME CHAIR, INC. ALL RIGHTS RESERVED. ULTIMATE GAME CHAIR, AND THE ULTIMATE GAME CHAIR LOGO ARE TRADEMARKS OF ULTIMATE GAME CHAIR, INC. IN THE U.S. AND/OR OTHER COUNTRIES. "PLAYSTATION" AND THE "PS" FAMILY LOGO ARE REGISTERED TRADEMARKS OF SONY COMPUTER ENTERTAINMENT INC. ONLINE PLAY REQUIRES INTERNET CONNECTION, NETWORK ADAPTOR (FOR PLAYSTATION 2) AND MEMORY CARD (8MB) (FOR PLAYSTATION 2) (EACH SOLD SEPARATELY). THE ONLINE ICON IS A TRADEMARK OF SONY COMPUTER ENTERTAINMENT AMERICA INC. TM, "AND THE NINTENDO GAMECUBE AND NINTENDO WII LOGOS ARE TRADEMARKS OF NINTENDO. © 2004 NINTENDO. SOFTWARE PLATFORM LOGO TM AND © EEMA 2003. MICROSOFT, XBOX, XBOX LIVE, THE LIVE LOGO, AND THE XBOX LOGOS ARE EITHER REGISTERED TRADEMARKS OR TRADEMARKS OF MICROSOFT CORPORATION IN THE U.S. AND/OR IN OTHER COUNTRIES AND ARE USED UNDER LICENSE FROM MICROSOFT. MICROSOFT, XBOX, XBOX LIVE, APPLE, IPOD AND THE IPOD LOGOS ARE EITHER REGISTERED TRADEMARKS OR TRADEMARKS OF APPLE CORPORATION IN THE U.S. AND/OR IN OTHER COUNTRIES AND ARE USED UNDER LICENSE FROM APPLE.

Ultimate Game Chair

ULTIMATE GAME CHAIR V3™



User Manual

WWW.ULTIMATEGAMECHAIR.COM
5089 LONE TREE WAY, ANTIOCH CA 94531-8016
(925) 756-6944

TABLE OF CONTENTS

| | |
|---|----|
| PARTS LIST | 2 |
| CHAIR ASSEMBLY INSTRUCTIONS | 2 |
| WARNINGS | 3 |
| CONNECTING TO . . . | |
| XBOX 360 CORE® WITH CONVENTIONAL TV | 4 |
| XBOX 360 ELITE® WITH CONVENTIONAL TV | 4 |
| XBOX ELITE® WITH HIGH DEFINITION TV (HDTV) | 5 |
| PLAYSTATION 3® WITH CONVENTIONAL TV | 5 |
| PLAYSTATION 3® WITH HIGH DEFINITION TV (HDTV) . . . | 6 |
| PLAYSTATION 2® WITH CONVENTIONAL TV | 6 |
| NINTENDO Wii® | 7 |
| PERSONAL COMPUTER | 7 |
| PLAYSTATION PORTABLE® | 8 |
| IPOD® / MP3 PLAYER | 8 |
| TWO V3™ GAME CHAIRS | 9 |
| GENERIC CONSOLE TO TELEVISION | 9 |
| GAME CONSOLE USING TV SPEAKERS | 10 |
| DVD/VHS PLAYER THROUGH AUDIO TUNER | 10 |
| HEADPHONES | 11 |
| POWER CABLE | 11 |
| WARRANTY | 12 |
| TROUBLESHOOTING GUIDE | 13 |

WIRELESS AUDIO ADAPTOR

TRY THE ULTIMATE GAME CHAIR

WIRELESS AUDIO ADAPTOR FOR YOUR ULTIMATE GAME CHAIR REACTOR!™

AVAILABLE ONLINE AT

[HTTP://WWW.ULTIMATEGAMECHAIR.COM](http://www.ultimategamechair.com)

CONNECT **WIRELESSLY** FROM ANY GAME CONSOLE, AUDIO DEVICE
OR COMPUTER TO YOUR ULTIMATE GAME CHAIR REACTOR!™



- PLUG AND PLAY
- CD-QUALITY HD STEREO SOUND
- NO REDUCTION IN AUDIO QUALITY
- NO DROPOUTS, STATIC, OR NOISE
- SIMPLE TO CONNECT
- NO MORE WIRES!

AVAILABLE ONLINE AT

[HTTP://WWW.ULTIMATEGAMECHAIR.COM](http://www.ultimategamechair.com)

TROUBLESHOOTING

• **Can I connect two or more Ultimate Game Chair V3s together?**

Yes, you can with a pair of RCA audio splitters available at most electronic and audio / video stores.

• **How does it connect to a PC?**

The **Ultimate Game Chair V3™** connects to the PC using the supplied RCA cable to the PC Sound Card. Also included with the game chairs is a 3.5 mm male to male connection that allows the game chair to connect through the stereo headphone jack on a PC.

• **I am having trouble connecting to my game console . What do I do?**

From the game console cable that connects to the TV, there is a red, white & yellow connector. Unplug the red and white only from the TV and leave the yellow connector plugged into the TV. The game chair came with a RCA stereo cable with red & white female adapter on one end. Connect the stereo cable to the female adapter, then connect the female adapter to the Game Console red and white that were plugged into the TV.

• **My game console connects to my television using a cable connection. How do I connect the game chair?**

You will need to purchase an RF Modulator that is available at most electronic stores. This will convert your coax (cable) connection to an RCA (yellow, red, white stereo) and allow you to connect the game chair stereo cable to the RF Modulator.

• **PS3 Question - I use HDMI for my 1080p television. Will audio/video quality be hurt?**

You can still connect the HDMI for the video and in the PS3 set up, change the audio to output using the RCA connectors. This will not affect the video quality. In the PS3 Menu, go to Settings -> Sound Settings -> Audio Output Settings -> Select AV Multi

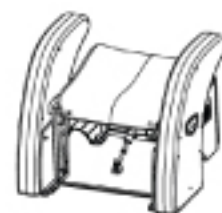
• **What is the weight limit of the Ultimate Game Chair V3™?**

The Reactor Game Chair is warranted at 200 lbs., although it has passed drop tests at 300 lbs.

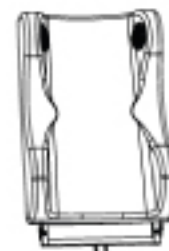
• **Will the Ultimate Game Chair V3™ work with my PC?**

Yes, the **Ultimate Game Chair V3™** is fully compatible (vibration and audio) with PC & Mac games. However, the **Ultimate Game Chair V3™** is somewhat low for desktop PC gamers and there is no tray for keyboard and mouse use.

PARTS LIST



CHAIR BASE (1)



CHAIR BACK (1)

ALLEN
WRENCH (1)

AIR CYLINDER (1)



NUTS (3)



BOLTS (3)



POWER CABLE (1)

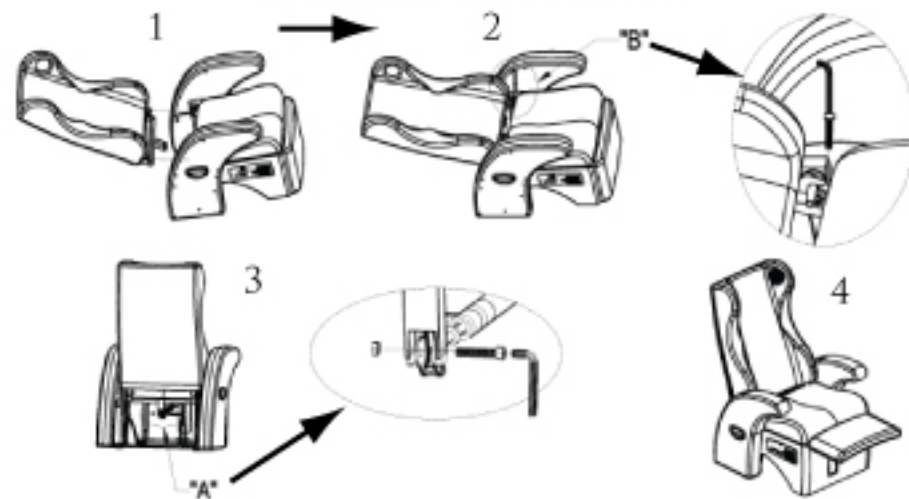


CHAIR AUDIO CABLE (1)

3.5mm MALE TO
MALE CABLE (1)

The above parts are included in every Ultimate Game Chair V3™ package. If any parts are missing, broken, damaged or worn, stop use of the product until repairs are made, using factory authorized parts. If you have not received any of the above parts contact customer support immediately.

ASSEMBLY INSTRUCTIONS



(1) Slide the chair back into the slots on the chair base. (2) Align the chair back following Diagram B above, insert the Bolts on both sides of the chair, and tighten them with the Allen Wrench. (3) Following Diagram A above, insert the air cylinder to the U-shaped reclining lever on the Chair Base and secure with a Bolt and Nut using the Allen Wrench. (4) Connect the power cable and the chair audio cable as described in the following pages. Refer to the Table of Contents (Page 1) for the appropriate connection method for your system.



WARNINGS



FAILURE TO FOLLOW THESE WARNINGS
COULD RESULT IN SERIOUS INJURY!



DO NOT STAND ON THIS CHAIR!

DO NOT USE THIS CHAIR AS A STEP LADDER!



RISK OF ELECTRIC SHOCK!

Pull plug directly from outlet.
Do not pull on electric power cable.



RISK OF HEARING LOSS!

If the volume is set too high there is a

risk of permanent damage to hearing. Consistent exposure to loud noise is the most common cause of hearing damage. If you experience a ringing or buzzing noise in the ears cease playing or turn down the volume immediately.



Safety Precautions:

- Use this product only for seating one person at a time. The Ultimate Game Chair V3™ is warranted at 200 lbs., although it has passed drop tests at 300 lbs.
- Do not use this chair unless all bolts, screws and knobs are firmly secured.
- At least every 4 months, check all bolts, screws and knobs to be sure they are tight.
- If parts are missing, broken, damaged or worn, stop use of the product until repairs are made, using factory authorized parts.



ULTIMATE GAME CHAIR, INC.
5089 Lone Tree Way
Antioch, CA 94531
TEL: 925-756-6944
FAX: 925-756-6944
support@ultimategamechair.com

MANUFACTURED IN CHINA

LIMITED WARRANTY

IF YOU HAVE ANY PROBLEMS OR QUESTIONS WITH THE SETUP, PLEASE DO NOT RETURN THE ITEM TO THE STORE YOU PURCHASED AT. PLEASE CALL OUR CUSTOMER SERVICE AT (925) 756-6944 OR EMAIL US AT SUPPORT@ULTIMATEGAMECHAIR.COM

The Ultimate Game Chair™ is warranted against defects in material and workmanship while owned by the "original purchaser" as defined below:

"Original purchaser" is defined as that party or entity which purchases the Ultimate Game Chair from an authorized Ultimate Game Chair™ retailer as shown by the original receipt. This warranty does not apply to "as is" or previously owned products.

Ultimate Game Chair, Inc. warrants its products to be free from defects in materials and workmanship (normal wear and tear, fading and stretching excepted), for 90 days from the date of purchase, except as provided below under the limited warranty.

The exceptions or exclusions to this warranty are as follows:

1. Upholstery material, foam cushion material, vibration motors, and all electronics are warranted against defects in material and workmanship for a period of 90 days, beginning on the date of purchase as shown on the original sales receipt.
2. Any warranty claim that is submitted after the limited warranty period, or without proper proof of purchase will not include the cost of parts, labor or delivery.
3. The warranty shall not apply to the Ultimate Game Chair, Inc. products which have been subjected to misuse, accidental damage, neglect, alteration, modification, or attachments, either caused by the original purchaser, shipping, storage, accident, fire, flood or acts of God.

In the event of a defect in material or workmanship covered by this warranty, Ultimate Game Chair, Inc. will repair or replace, at their discretion, without charge the warranted furniture within a reasonable amount of time.

DELIVERY CHARGES ARE THE RESPONSIBILITY OF THE ORIGINAL PURCHASER.


We reserve the right to require damaged parts to be returned to us upon request. Natural markings such as scars, brands, grain variations, wrinkles, color variations, etc. will be considered normal characteristics and not construed as defects. We cannot warrant leather/fabric against scratching or scuffing, as all leather/fabric is subject to blemishes with use. We cannot warrant against broken or damaged cords as it is the responsibility of the Original Purchaser to use care and discretion to protect the Ultimate Game Chair™.

For claims or questions concerning this warranty, please contact Ultimate Game Chair, Inc. Customer Service department by phone (925) 756-6944, or by email email@ultimategamechair.com. Be prepared to provide your name, address, daytime phone number, the model and serial number of the product, date of purchase and the store where it was purchased. Ultimate Game Chair, Inc. requires that the original sales receipt be submitted with all requests to confirm that you are the original purchaser according to our written warranty.

All warranties are limited to the original purchaser for normal use which is defined as a standard work week of forty hours by a person weighing 200 lbs. or less. Ultimate Game Chair, Inc. also offers extended warranties available on our website at: <http://www.UltimateGameChair.com>


CONNECTING HEADPHONES



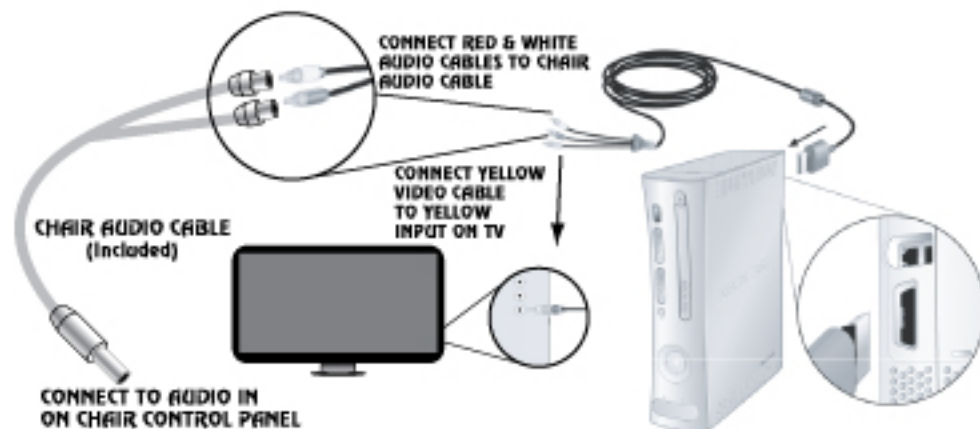
Connect your headphones to the input marked with a  on the game chair control panel.

CONNECTING POWER CABLE



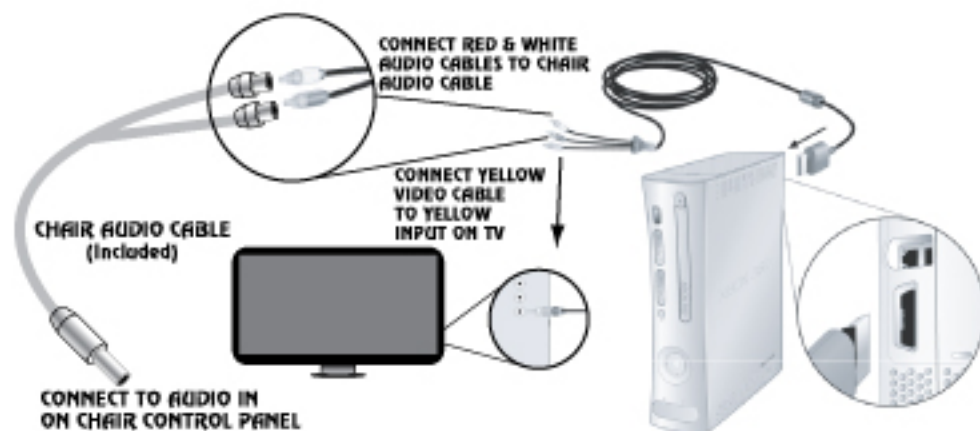
Connect the power cable to the input marked with a  on the game chair control panel. Connect the opposite end to the power outlet.

CONNECTING TO XBOX CORE® WITH CONVENTIONAL TV



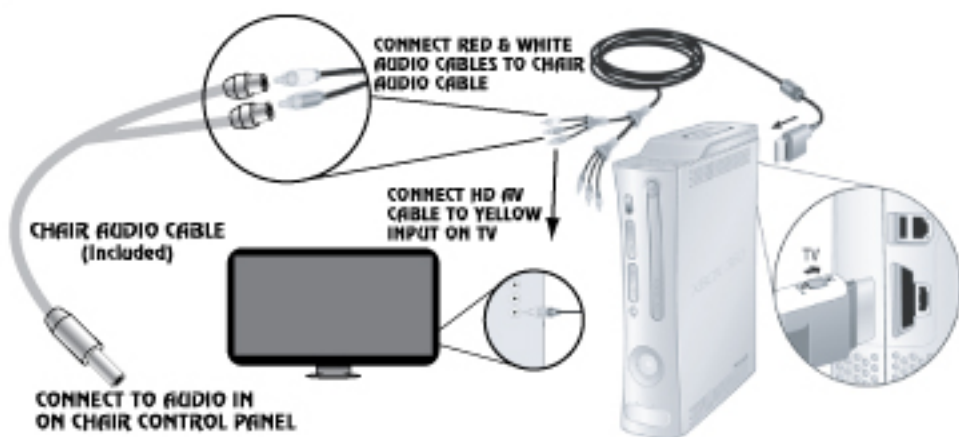
Connect the yellow banded cable to the yellow input on your television. Connect the (red and white) right and left audio cables to the Chair Audio Cable (included). Connect the Chair Audio Cable to the Audio In on the chair control panel.

CONNECTING TO XBOX 360 ELITE® WITH CONVENTIONAL TV



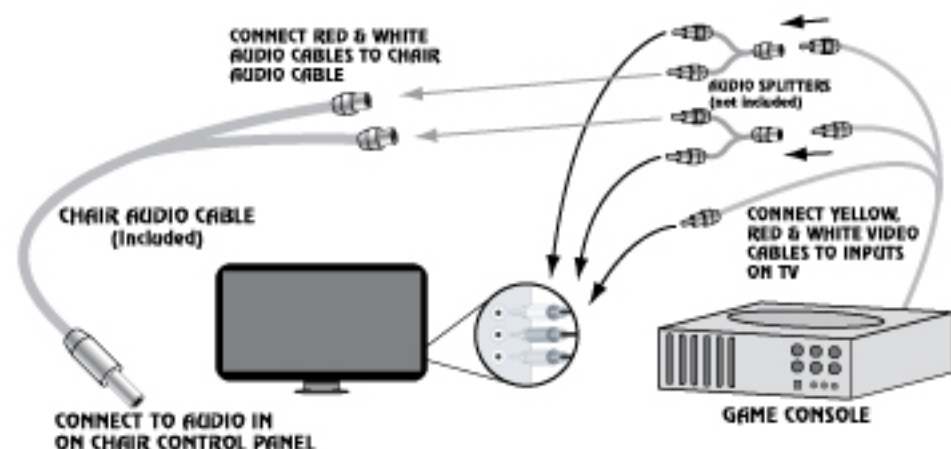
Connect the yellow banded cable to the yellow input on your television. Connect the (red and white) right and left audio cables to the Chair Audio Cable (included). Connect the Chair Audio Cable to the Audio In on the chair control panel.

CONNECTING TO XBOX ELITE® WITH HIGH-DEFINITION TV (HDTV)



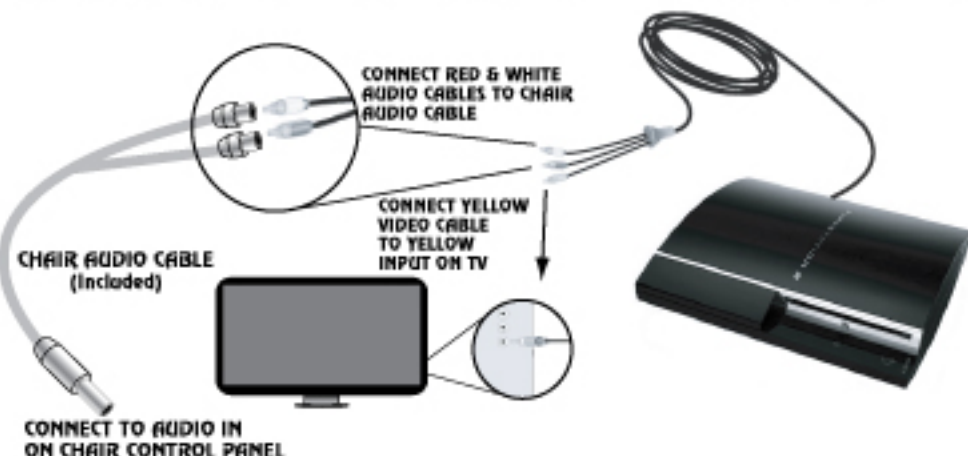
Connect the yellow banded HD AV cable to yellow input on your television. Leave the red, green, and blue color-banded video connectors unconnected. Connect the (red and white) right and left audio cables to the Chair Audio Cable (included). Connect the Chair Audio Cable to the Audio In on the chair control panel.

CONNECTING GAME CONSOLE USING TV SPEAKERS



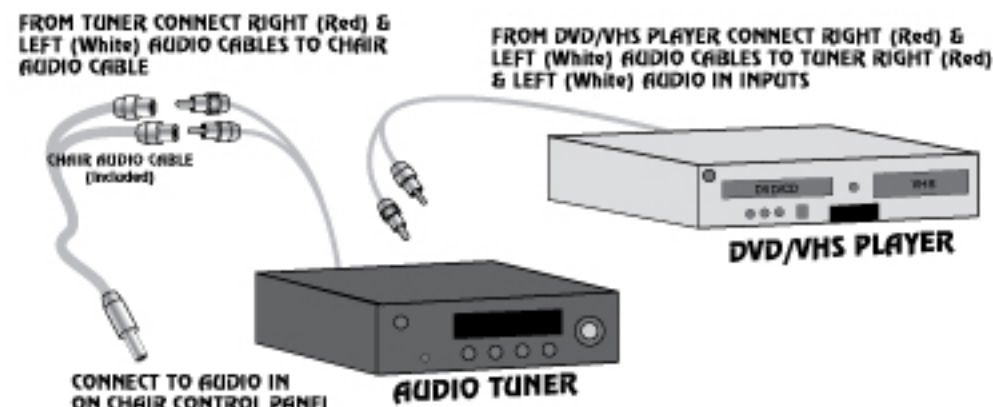
Connect the yellow video cable to the yellow input on your television. Connect the (red) right audio cable to an audio Splitter (not included). Connect the (white) left audio cable to an audio Splitter (not included). Following the diagram above, connect the audio Splitters to the Chair Audio Cables (included). Connect the (red) right audio cable and (left) white audio cable from the audio Splitter to the corresponding color inputs on the television. Connect the Chair Audio Cable to the Audio In on the chair control panel.

CONNECTING TO PLAYSTATION 3® WITH CONVENTIONAL TV



Connect the yellow banded cable to the yellow input on your television. Connect the (red and white) right and left audio cables to the Chair Audio Cable (included). Connect the Chair Audio Cable to the Audio In on the chair control panel.

CONNECTING TO DVD/VHS PLAYER THROUGH AUDIO TUNER



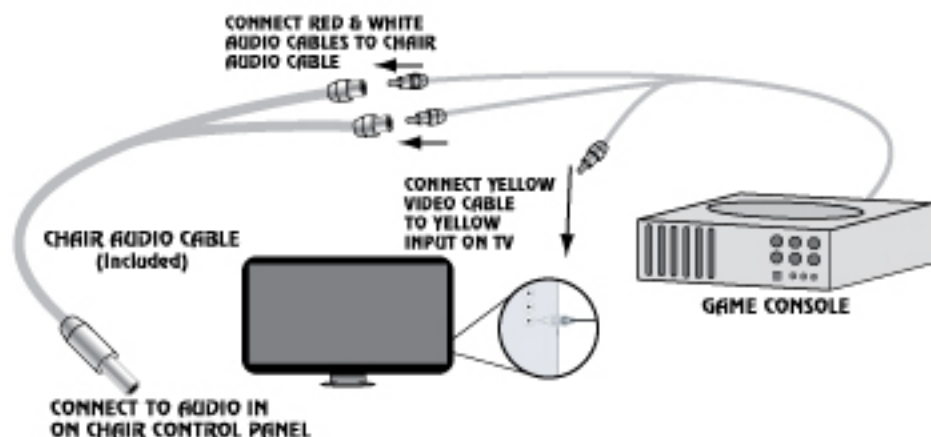
Connect the right (red) and left (white) audio cables from your DVD/VHS Player to the Audio Inputs of your Audio Tuner. Connect right and left audio cables to the Audio Tuner Outputs. (Refer to the instructions given by your audio tuner.) Connect the audio cables to the Chair Audio Cable. Connect the Chair Audio Cable to the Audio In on the chair control panel.

CONNECTING TWO V3™ GAME CHAIRS



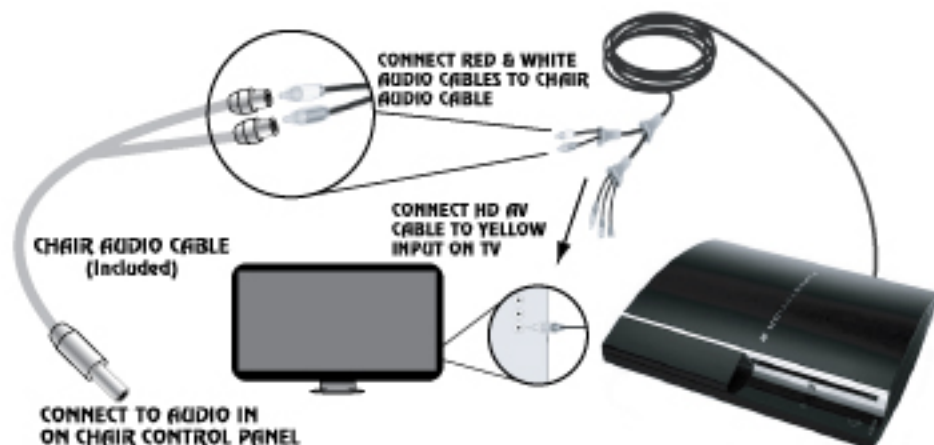
Connect the yellow video cable to the yellow input on your television. Connect the (red) right audio cable to an Audio Splitter (not included). Connect the (white) left audio cable to an Audio Splitter (not included). Following the diagram above, connect the audio Splitters to the Chair Audio Cables (included). Connect the Chair Audio Cables to the Audio In on the chair control panels.

CONNECTING GENERIC GAME CONSOLE TO TELEVISION



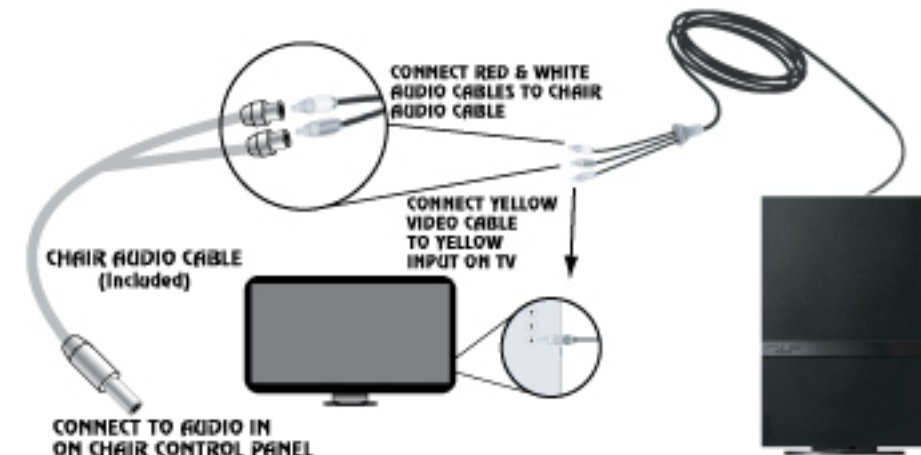
Connect the yellow banded cable to the yellow input on your television. Connect the (red and white) right and left audio cables to the Chair Audio Cable (included). Connect the Chair Audio Cable to the Audio In on the chair control panel.

CONNECTING TO PLAYSTATION 3® WITH HIGH-DEFINITION TV (HDTV)



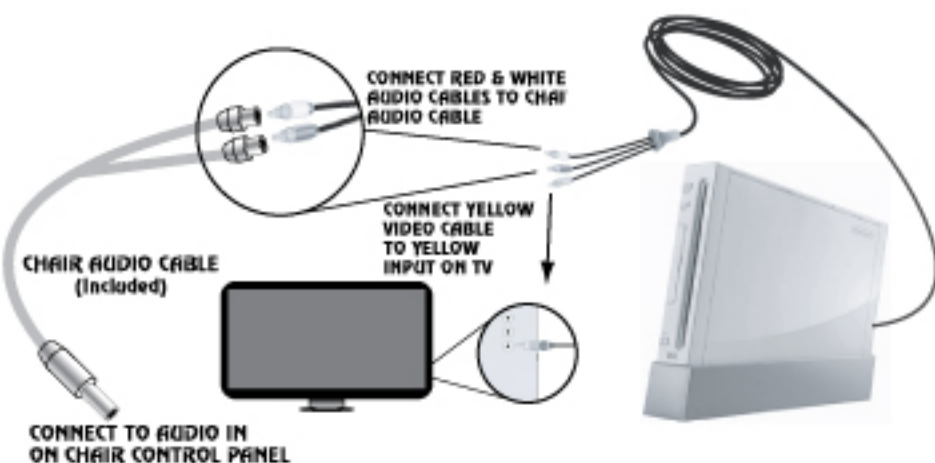
Following the instructions that came with your game system, connect the Component AV cable (sold separately) to your television. Connect the yellow banded HD AV cable to yellow input on your television. Connect the (red and white) right and left audio cables to the Chair Audio Cable (included). Connect the Chair Audio Cable to the Audio In on the chair control panel. In the Playstation 3® Menu, go to Settings -> Sound Settings -> Audio Output Settings -> Select AV Multi

CONNECTING TO PLAYSTATION 2® WITH CONVENTIONAL TV



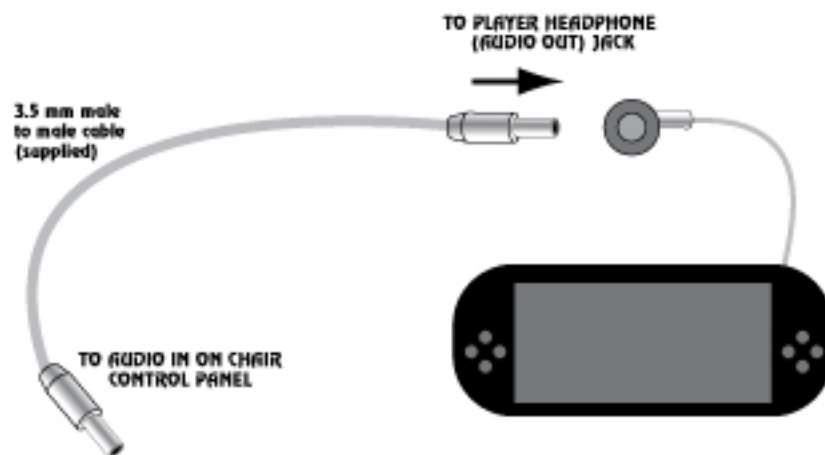
Connect the yellow banded cable to the yellow input on your television. Connect the (red and white) right and left audio cables to the Chair Audio Cable (included). Connect the Chair Audio Cable to the Audio In on the chair control panel.

CONNECTING TO NINTENDO WII



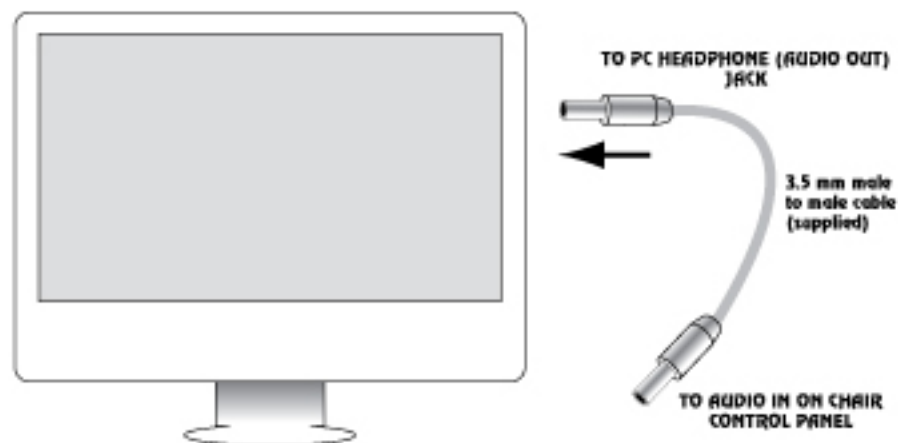
Connect the yellow banded cable to the yellow input on your television. Connect the (red and white) right and left audio cables to the Chair Audio Cable (included). Connect the Chair Audio Cable to the audio in on the chair control panel.

CONNECTING TO PLAYSTATION PORTABLE



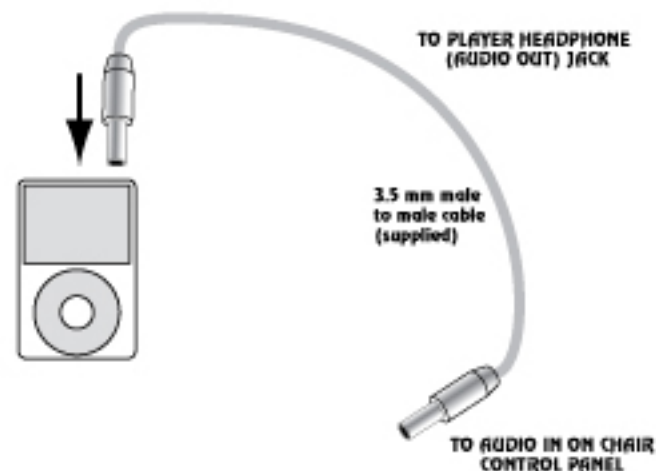
Connect the 3.5 mm male to male cable (supplied) to the Headphone Jack on your Playstation Portable to the Audio In on the chair control panel. Be sure to adjust the volume on your player to a high enough level that the chair can respond.

CONNECTING TO PERSONAL COMPUTER



Connect the 3.5 mm male to male cable (included) to the Headphone (Audio Out) Jack on your computer to the Audio In on the chair control panel. Be sure to adjust the volume on your computer to a high enough level that the chair can respond.

CONNECTING TO IPOD / MP3 PLAYERS



Connect the 3.5 mm male to male cable (supplied) to the Headphone (Audio Out) Jack on your MP3 Player to the Audio In on the chair control panel. Be sure to adjust the volume on your player to a high enough level that the chair can respond.

FRONT



BACK

